



24-Port UTP CAT6 Rackmount Patch Panel

Evrensel UTP CAT6 patch paneli, 24 bağlantı noktası; Kablo yönetim çubuğu (Organizer) dahildir Standart boyut 24 bağlantı noktalı anahtar yuvası jakı ekiyle, herhangi bir standart bilgi modülü ve çoklu ortam modülü takılabilir veya değiştirilebilir; Her bir portta altın kaplı kontaklar, ağ talepleriniz için güvenilir bir bağlantı sağlar; 22- 26AWG katı veya telli tel çapını destekler; Hem T568A & T568B kablo konfigürasyonları ile uyumludur; Bakır gigabit Ethernet için gerekli olan 250 MHz CAT6 için sertifikalı; Zahmetsiz bir şekilde monte edilebilir 19" rack kabinetlere kolayca monte edilir.



Cable ID: LEOPP-UC6-2524[TIA]

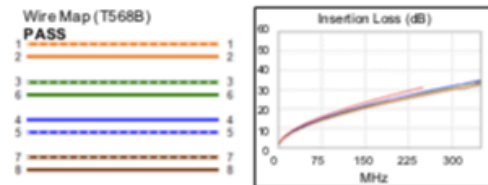
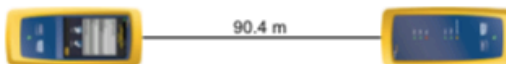
Date / Time: 04/17/2019 11:57:00 AM
Headroom 3.6 dB (NEXT 36-45)
Test Limit: TIA Cat 6 Perm. Link
 Cable Type: Cat 6 U/UTP
 NVP: 69.0%

Software Version: V6.0 Build 6
 Limits Version: V7.0
 Calibration Start Date:
 Main (Module): 06/26/2018
 Remote (Module): 06/26/2018

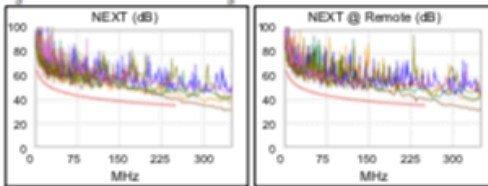
Test Summary: PASS

Model: DSX-8000
 Main S/N: 1820324
 Remote S/N: 1820416
 Main Adapter: DSX-PLA804
 Remote Adapter: DSX-PLA804

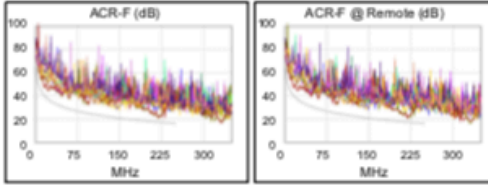
Length (m), Limit 90.0	[Pair 78]	90.4
Prop. Delay (ns), Limit 498	[Pair 45]	465
Delay Skew (ns), Limit 44	[Pair 45]	28
Resistance (ohms)	[Pair 45]	13.48
Insertion Loss Margin (dB)	[Pair 45]	2.4
Frequency (MHz)	[Pair 45]	250.0
Limit (dB)	[Pair 45]	31.1



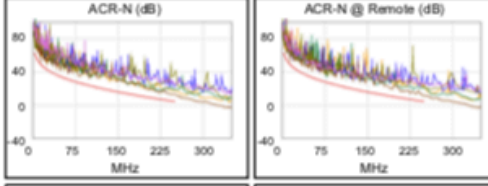
	Worst Case Margin		Worst Case Value	
	MAIN	SR	MAIN	SR
PASS				
Worst Pair	36-45	36-45	36-45	36-45
NEXT (dB)	5.1	3.6	5.3	3.6
Freq. (MHz)	245.0	234.5	250.0	234.5
Limit (dB)	35.5	35.8	35.3	35.8
Worst Pair	36	45	36	45
PS NEXT (dB)	6.3	5.6	6.3	5.6
Freq. (MHz)	245.0	234.5	245.0	234.5
Limit (dB)	32.9	33.2	32.9	33.2



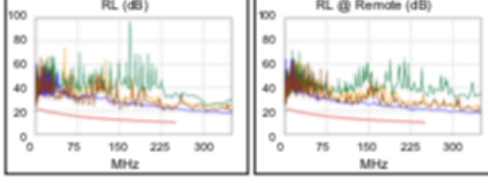
	Worst Case Margin		Worst Case Value	
	MAIN	SR	MAIN	SR
PASS				
Worst Pair	36-45	36-45	36-45	36-45
ACR-F (dB)	3.0	3.0	3.0	3.0
Freq. (MHz)	219.0	220.0	219.0	220.0
Limit (dB)	17.4	17.3	17.4	17.3
Worst Pair	45	45	45	45
PS ACR-F (dB)	5.6	5.6	5.6	5.6
Freq. (MHz)	219.0	220.0	219.0	220.0
Limit (dB)	14.4	14.3	14.4	14.3



	Worst Case Margin		Worst Case Value	
	MAIN	SR	MAIN	SR
N/A				
Worst Pair	36-45	36-45	36-45	36-45
ACR-N (dB)	7.0	5.9	7.7	7.4
Freq. (MHz)	32.8	234.5	250.0	250.0
Limit (dB)	39.4	5.8	4.2	4.2
Worst Pair	36	45	36	45
PS ACR-N (dB)	8.4	7.3	9.4	9.3
Freq. (MHz)	32.8	78.0	250.0	250.0
Limit (dB)	37.0	24.9	1.6	1.6



	Worst Case Margin		Worst Case Value	
	MAIN	SR	MAIN	SR
PASS				
Worst Pair	78	45	78	45
RL (dB)	8.8	10.1	9.7	10.1
Freq. (MHz)	3.8	230.0	243.0	230.0
Limit (dB)	21.0	10.4	10.1	10.4



Compliant Network Standards:
 10BASE-T 100BASE-TX 100BASE-T4
 1000BASE-T 2.5GBASE-T 5GBASE-T
 ATM-25 ATM-51 ATM-155
 100VG-AnyLan TR-4 TR-16 Active
 TR-16 Passive